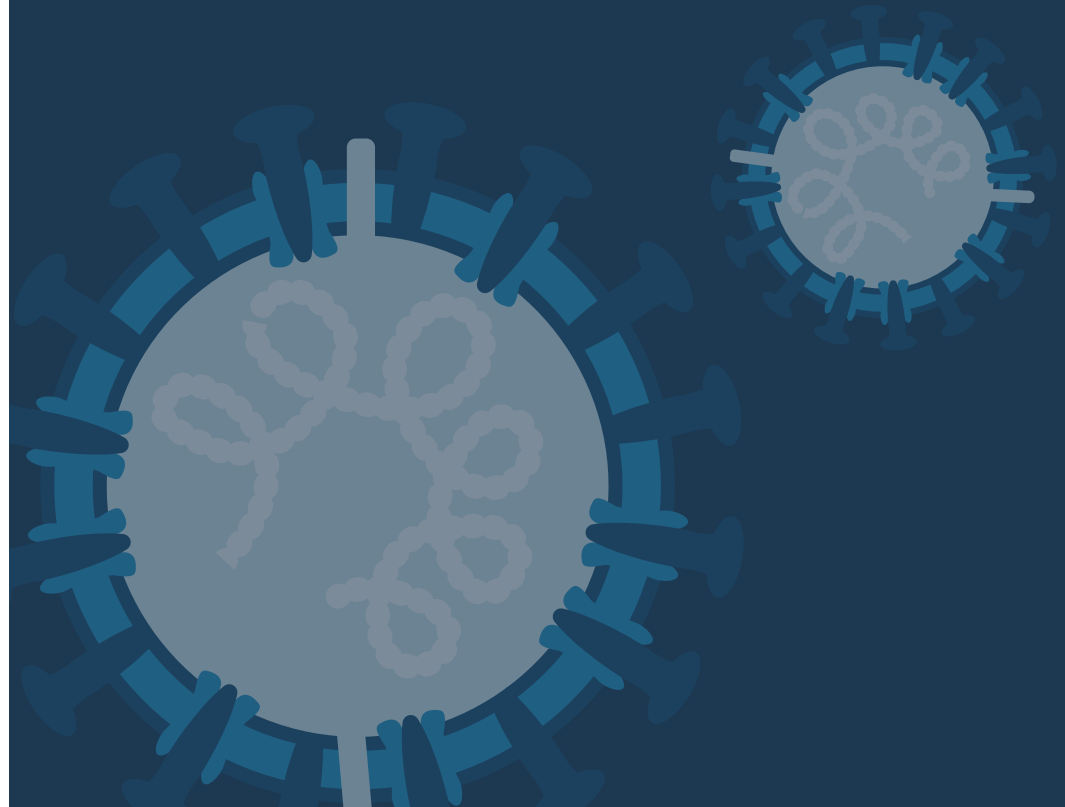


For health related queries visit  
[covid19health.gov.mt](https://covid19health.gov.mt)



Information for  
persons undergoing  
**COVID-19 testing** at  
the **COVID Assessment  
Centre** in Luqa,  
Pembroke and Gozo



## What is COVID-19

Coronaviruses belong to a family of viruses causing infection in humans and a variety of animals.

Outbreaks of novel infections among people are always of public health concern particularly when there is little knowledge about the characteristics of the virus, how it spreads between people, how severe the resulting infections are and how to treat them.

COVID-19 is the name assigned to the virus that is causing the 2019 novel coronavirus outbreak.

There are many types of human coronaviruses including some that commonly cause mild upper-respiratory tract illnesses. COVID-19 is a new disease, caused by a novel (or new) coronavirus that has not previously been encountered by humans.

## How is it spread

Coronaviruses can spread from human to human following close contact with an infected person. This can occur by contact with infected droplets emitted during coughing or sneezing. Alternatively, this can be transmitted through one's hands touching and contaminating others or by touching contaminated surfaces.

## Instructions for after you leave the testing centre

- ✓ Please go directly home and do not stop anywhere on the way.
- ✓ It is advisable that both you and the person accompanying you remain in quarantine until the outcome of the test and you are advised what your next steps should be by the public health professional, who will contact you by phone.
- ✓ Please note that if you have returned from any country you will still need to remain in quarantine for 14 days from the date of return.

## Mandatory quarantine

Quarantine means that you should stay in your home and not go out for the 14-day period that you are required to isolate for. Only people who usually live in the household should be in the home during this time. Do not allow visitors into the home. Those under quarantine should self-monitor their temperature twice daily. Also monitor for symptoms of cough, shortness of breath and/ or fever and call the **public health helpline 111** if you develop any of these symptoms. Members who live in the same household, also need to be in quarantine and observe the same rules. People who have completed quarantine for 14 days without any symptoms may go about their usual activities.

Visitors to Malta must also undergo mandatory quarantine in their accommodation. They may leave Malta before the 14 day period is over, as long as they do not develop symptoms.



## Communication of test results

The outcomes of the swab test will be communicated to you within 36 hours of taking the test.

This will be communicated to you via telephone and further advice regarding the next steps to follow will be provided.